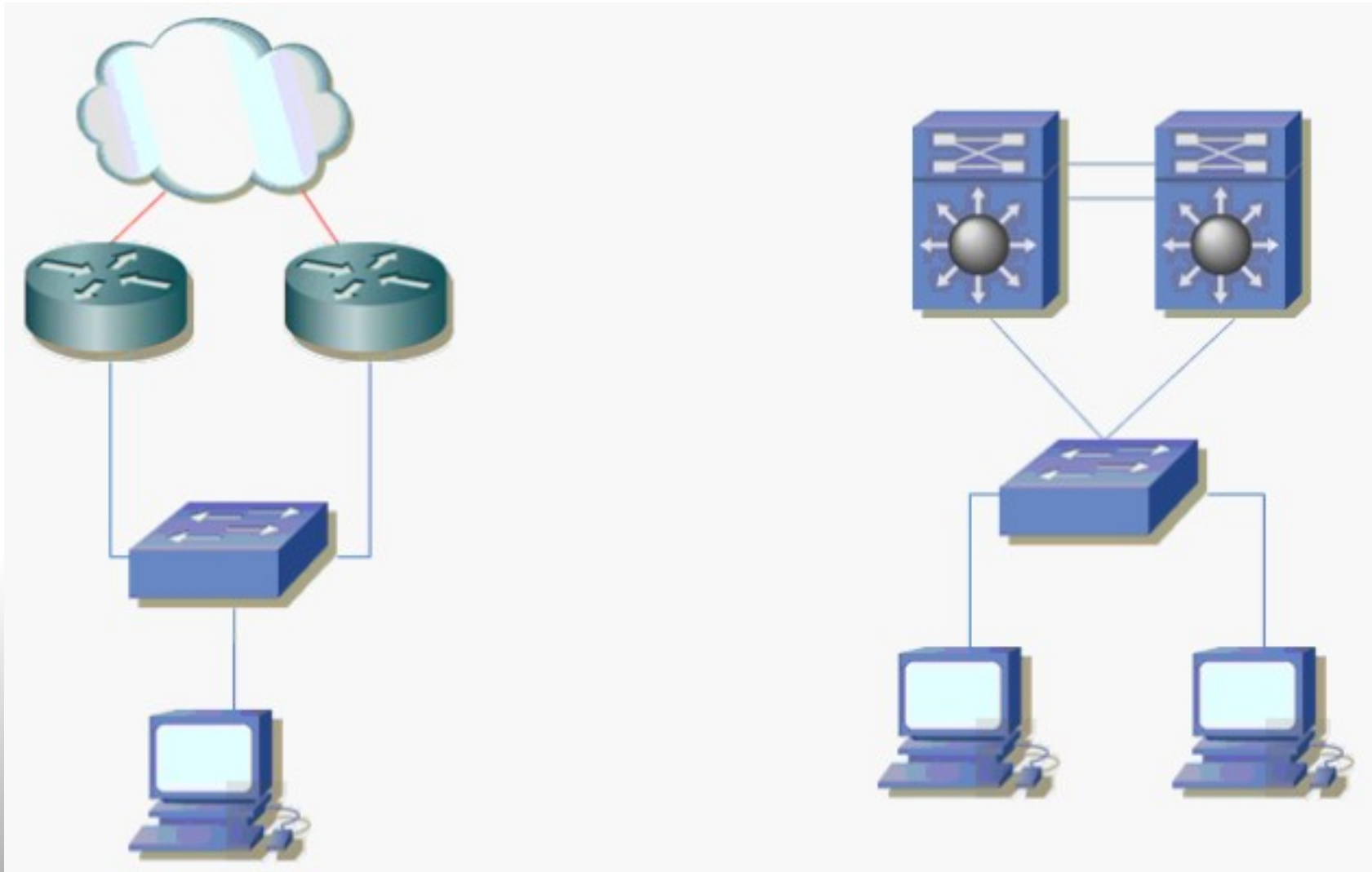


CCNP3 BCMSN

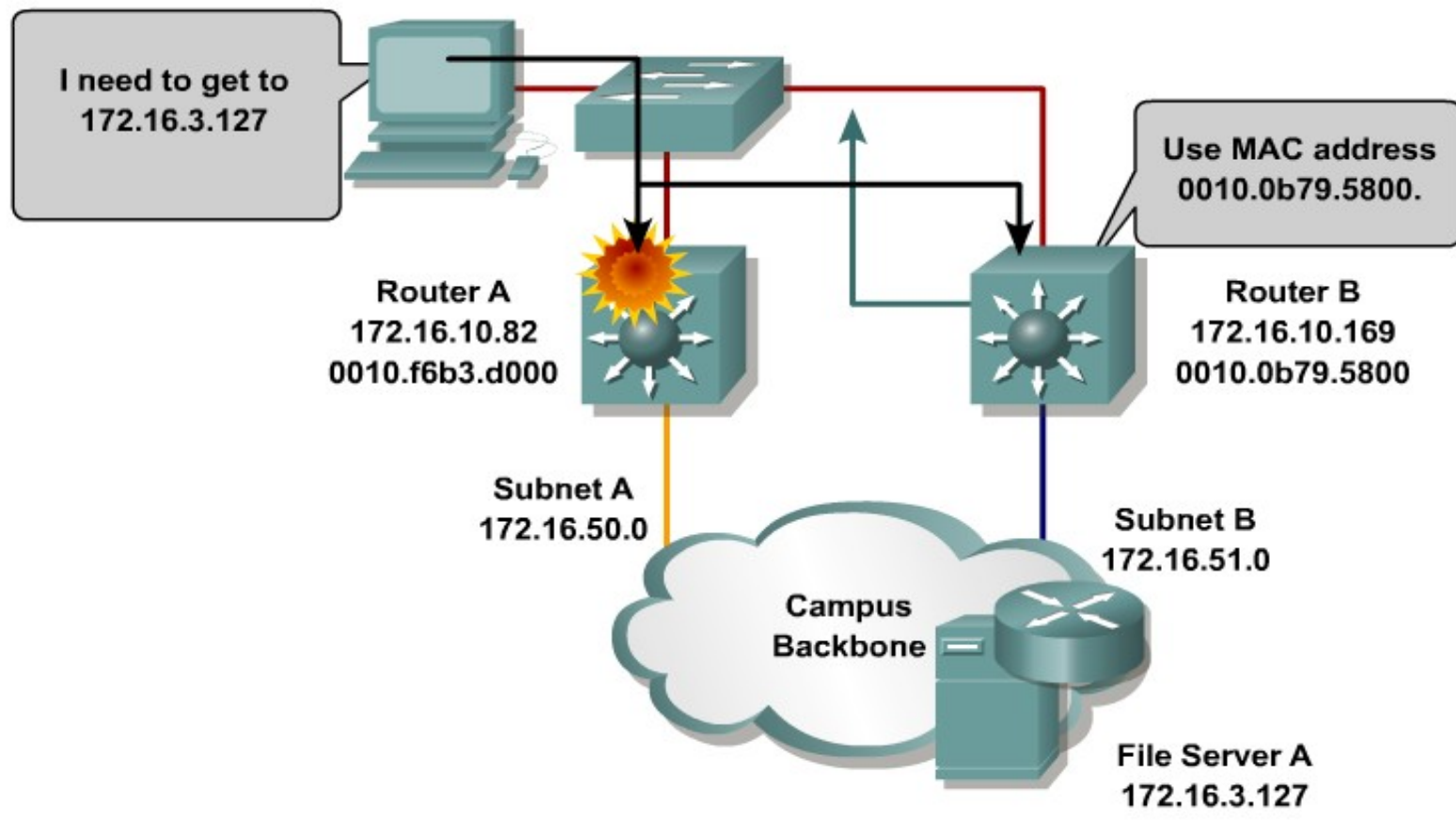
Implementing High Availability



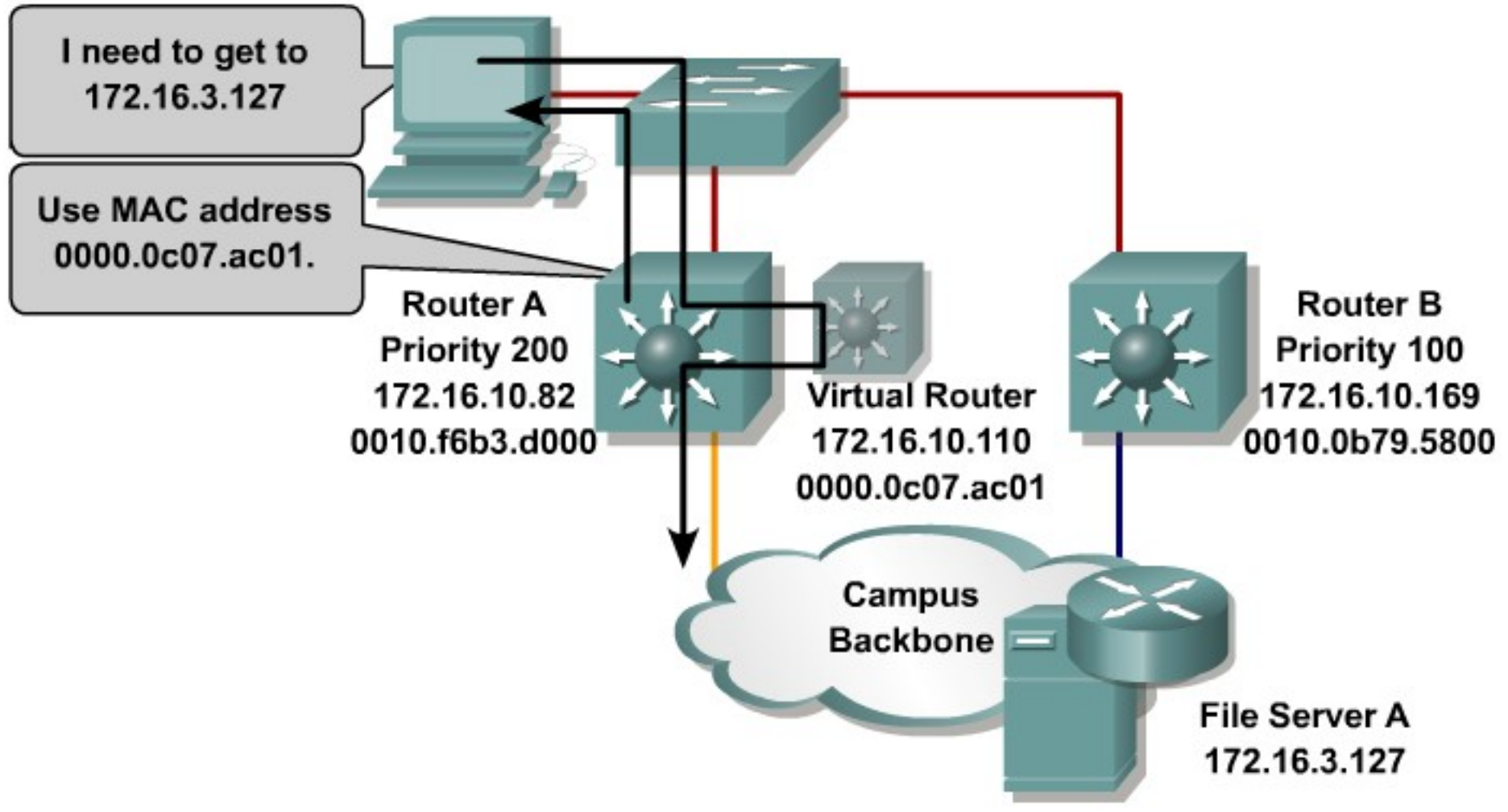
Configuring Layer 3 Redundancy with HSRP

Default Gateway går ned, hvad så?

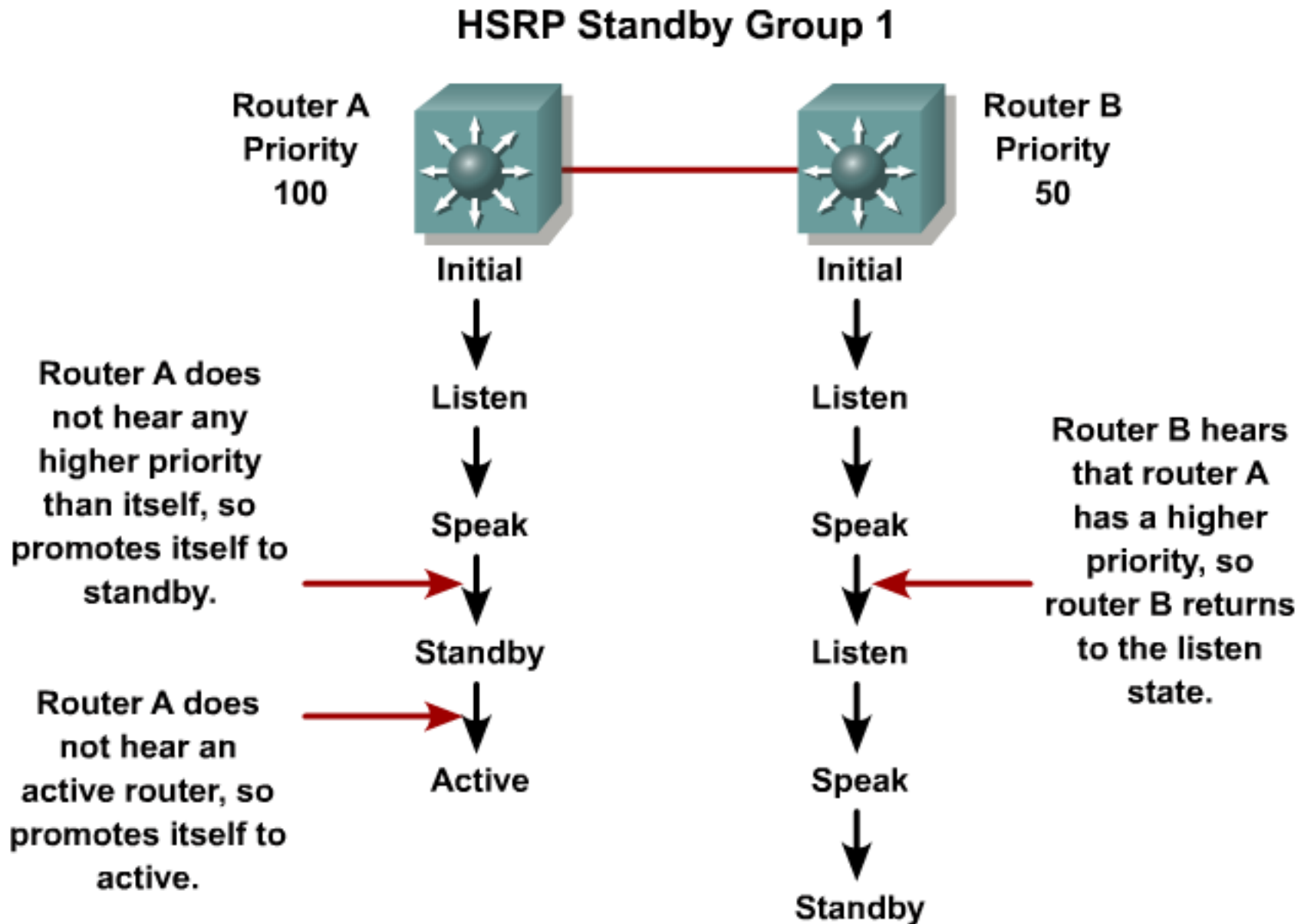
Proxy ARP er som standard sat til.



HSRP Operations



HSRP States



HSRP Configuration Commands

Command	Description
Switch(config-if)# standby <i>group-number</i> ip <i>ip-address</i>	Configures HSRP on the interface for the indicated group number. The IP address is that of the virtual gateway. The default group number is 0.
Switch(config-if)# no standby <i>group-number</i> ip <i>ip-address</i>	Disables HSRP on the interface.
Switch# show running-config	Displays HSRP parameters configured on each interface.
Switch# show standby [<i>interface</i>] [<i>group</i>] [brief]	Displays HSRP status. Use the optional parameters to minimize the output.

Optimizing HSRP

Option	Description
Standby priority	This option allows the network administrator to control the order in which active routers for a group are selected.
Standby preempt	The preempt option allows a router to regain its role of active router even if there is an existing active router on the segment.
Hello message timer adjustment	This option is used to configure the time between hello packets and the time before other routers declare the active router to be down.
HSRP interface tracking	The standby track interface configuration command ties the router hot standby priority to the availability of its interfaces and is useful for tracking interfaces that are not configured for HSRP.

Optimizing HSRP - Commands

```
Switch(config-if)#standby group-number  
priority priority-value
```

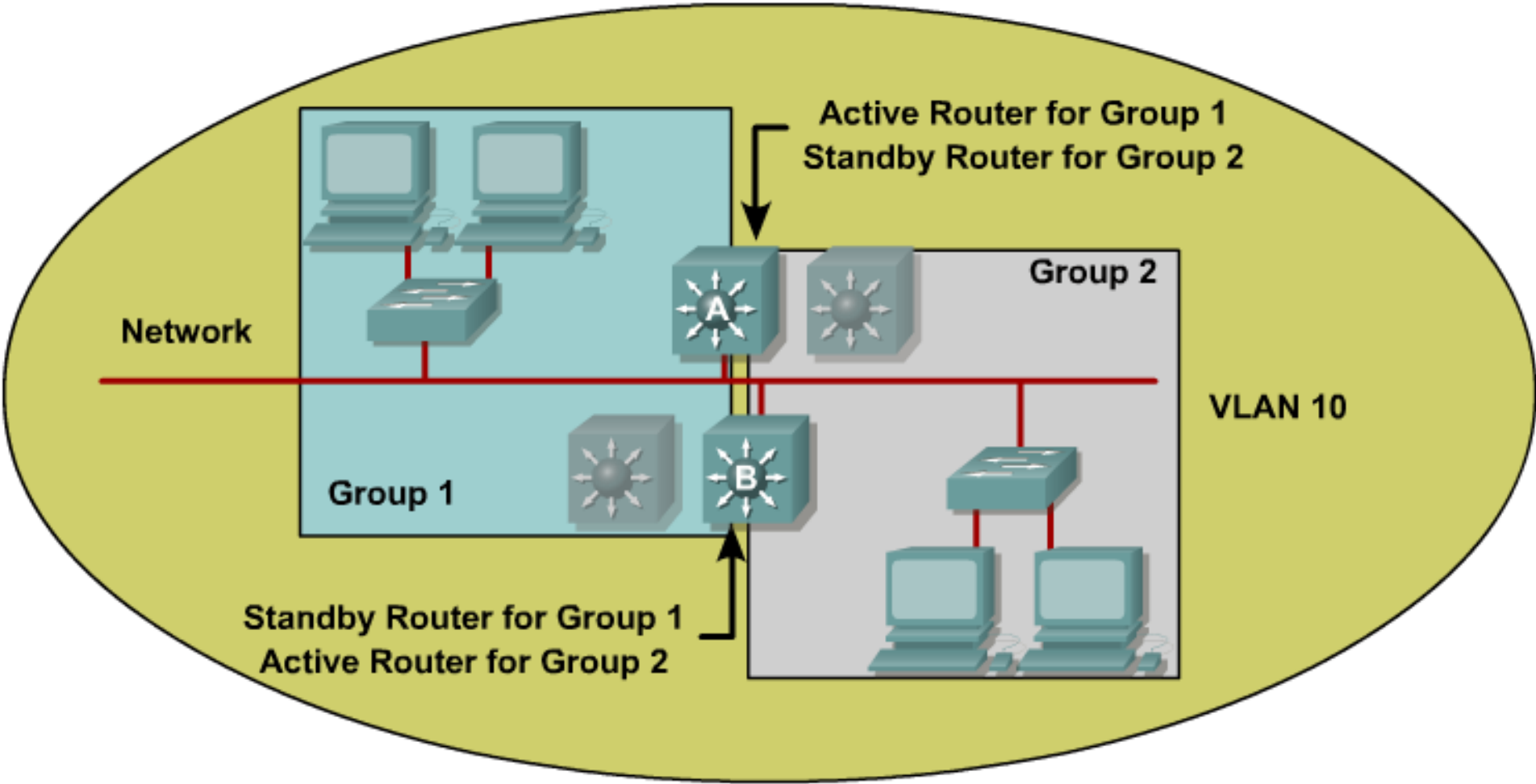
```
Switch(config-if)#standby [group-number]  
preempt [{delay} [minimum delay] [sync delay]]
```

```
Switch(config-if)#standby group-number timers  
[msec] hellotime holdtime
```

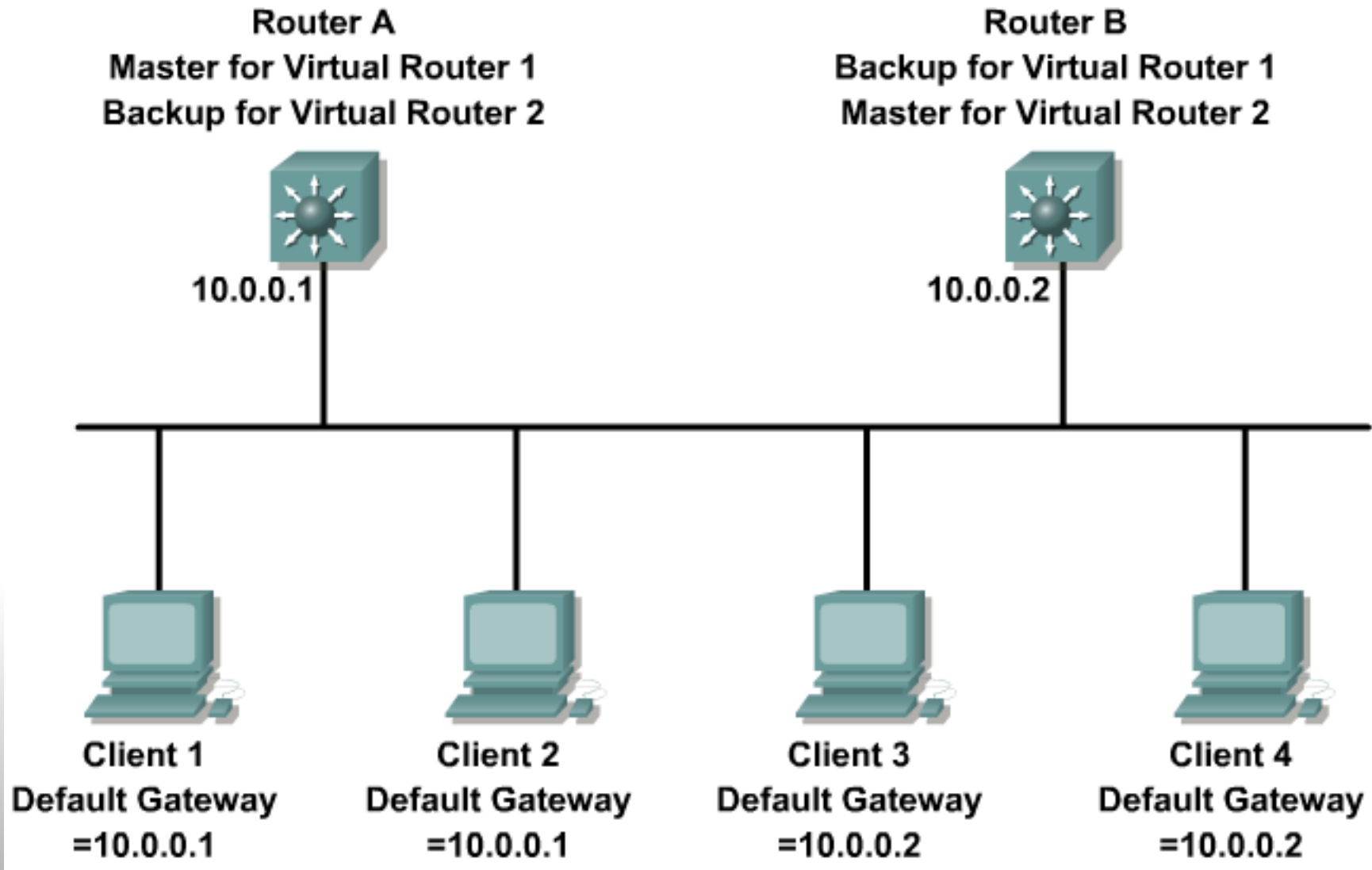
```
Switch(config-if)#standby [group-number] track type number  
[interface-priority]
```

```
Switch(config)#interface vlan 10  
Switch(config-if)#standby 1 track GigabitEthernet 0/7 50  
Switch(config-if)#standby 1 track GigabitEthernet 0/8 60
```

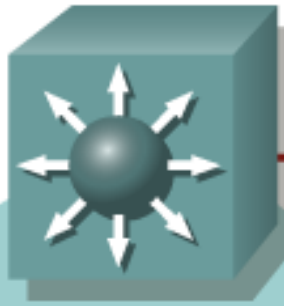
Optimizing HSRP - Load Sharing



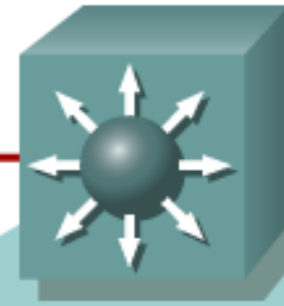
Layer 3 Redundancy with VRRP and GLBP



Configuring VRRP

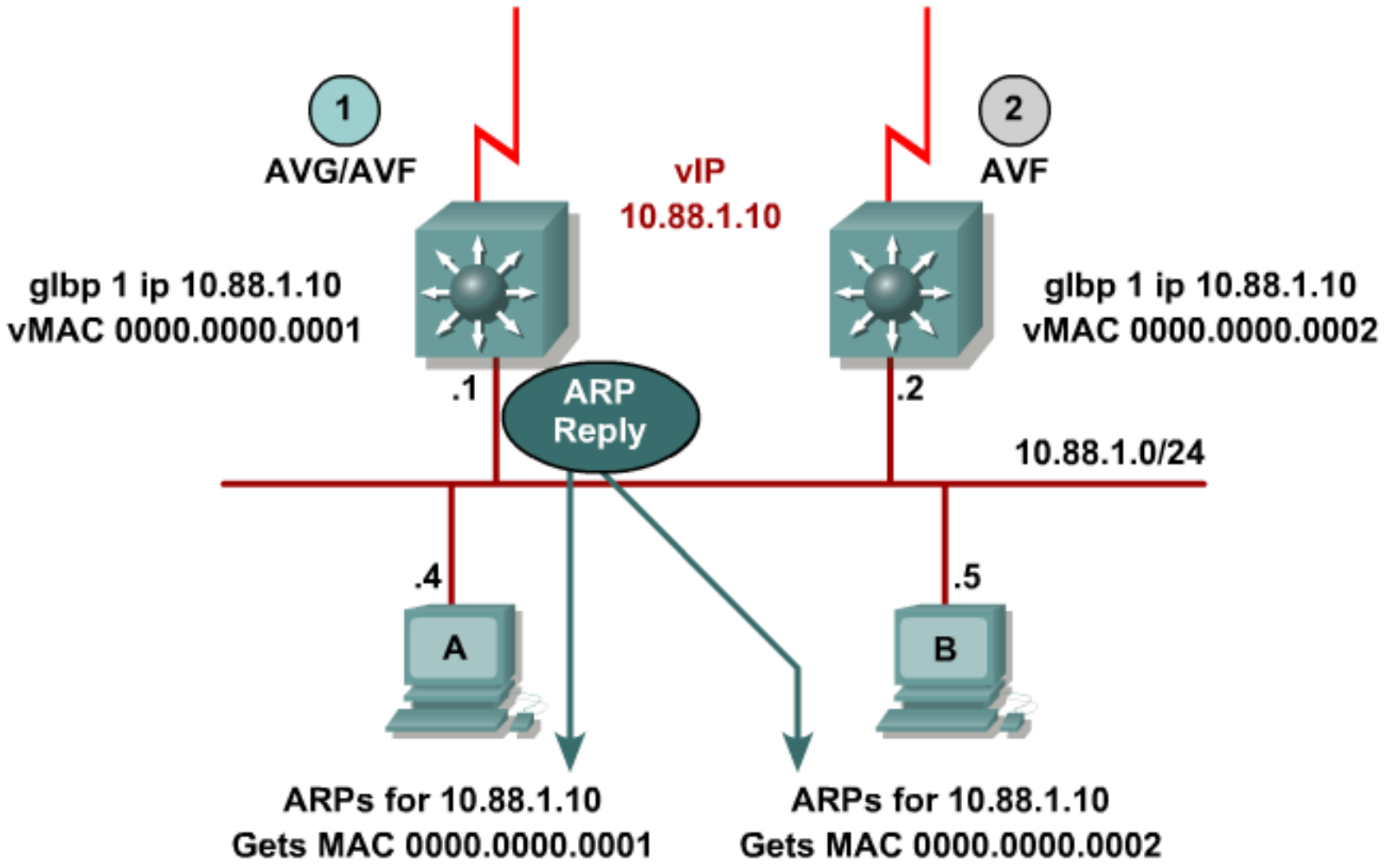


```
interface vlan10
 ip address 10.1.10.5
 vrrp 10 ip 10.1.10.1
 vrrp 10 priority 150
 vrrp 10 timers advertise 4
```

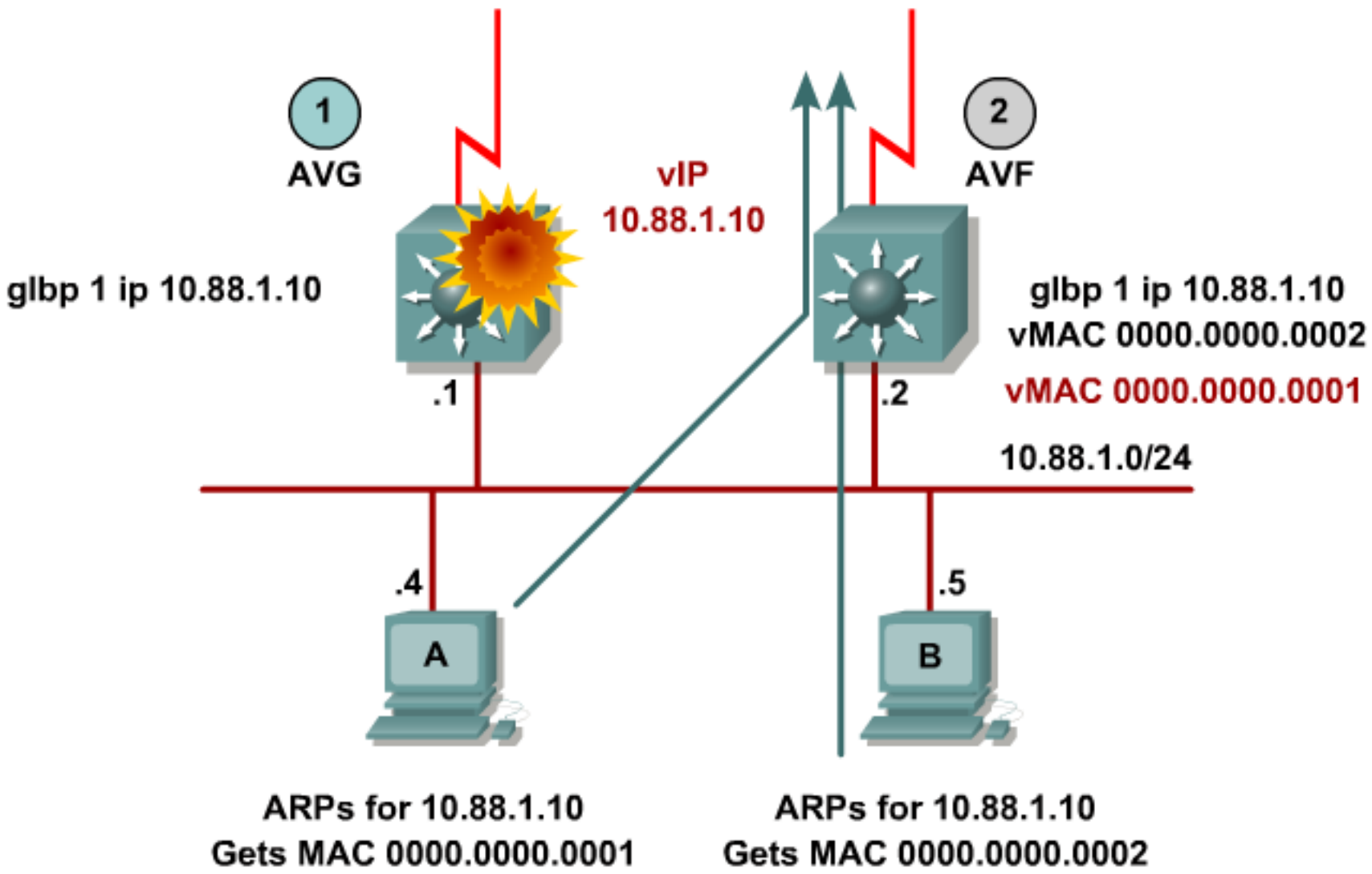


```
interface vlan10
 ip address 10.1.10.6
 vrrp 10 ip 10.1.10.1
 vrrp 10 priority 100
 vrrp 10 timers advertise 4
```

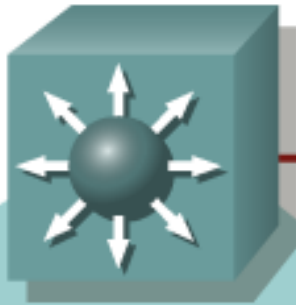
GLBP Operations



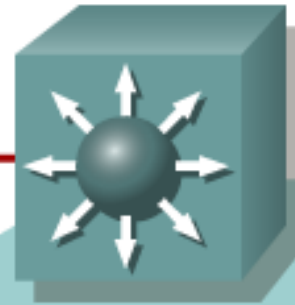
GLBP Operations - interface tracking



Configuring GLBP



```
interface vlan7
 ip address 10.1.7.5
 glbp 7 ip 10.1.7.1
 glbp 7 priority 150
 glbp 7 timers msec 200 msec 700
```



```
interface vlan7
 ip address 10.1.7.6
 glbp 7 ip 10.1.7.1
 glbp 7 priority 100
 glbp 7 timers msec 200 msec 700
```

Q and A

Ikke til mig!





cisco